

Type of Machine:

TELEHANDLER / CRANE

Make:

New Holland Telehandler

Model:

LM 1745

Capacity:

4.5 tonne at 1.0m, max reach 16.5m

Year Manufacture:

2006

Registration Number:

C47757

Vin Number:

01021186

Engine Number:

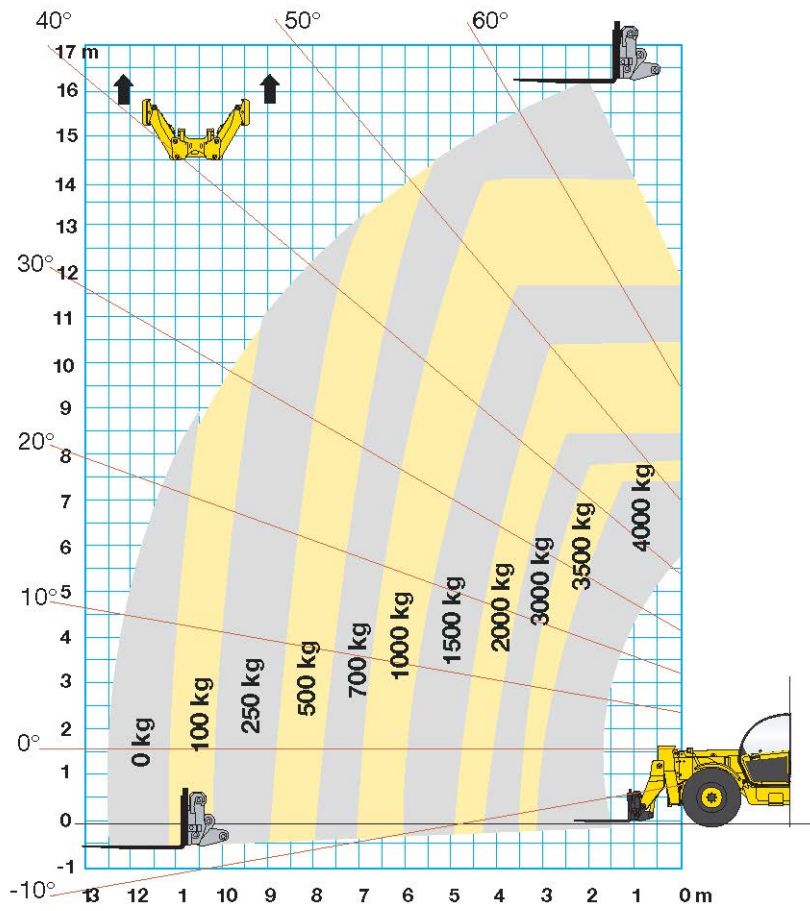
00211647

Features:

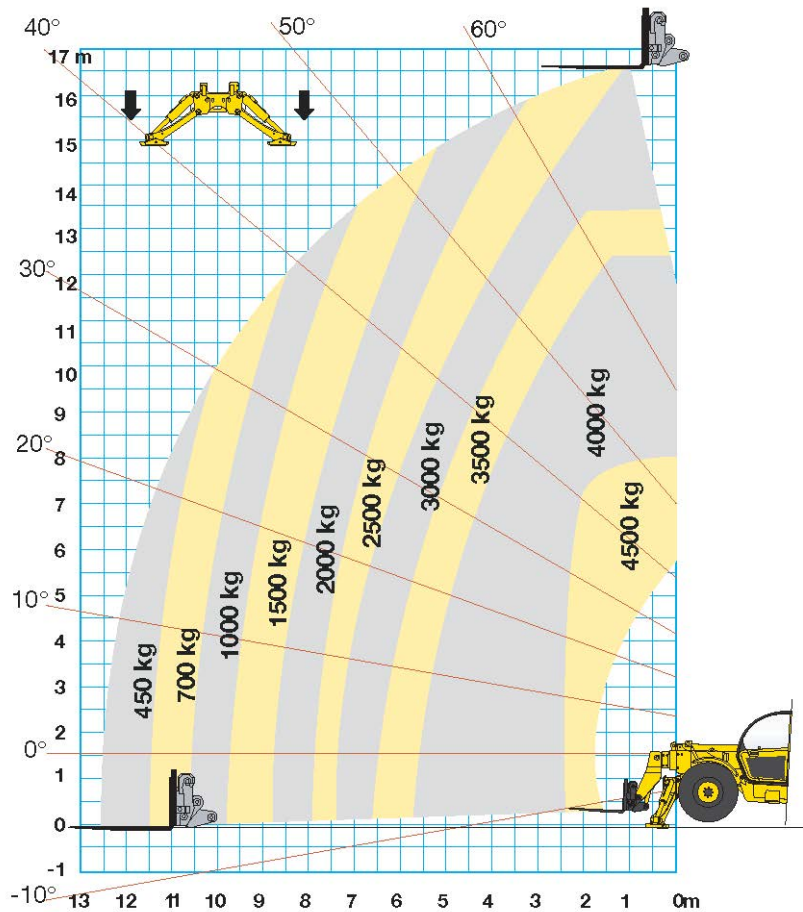
- Forks
- 4 in 1 bucket
- Work cage
- Crane Jib
- Screw Pile Attachment
- Auger 300 / 450 / 600 / 900 / 1200 dia x 9m deep.



LM1745 TURBO



LM1745 TURBO



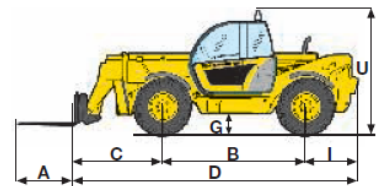
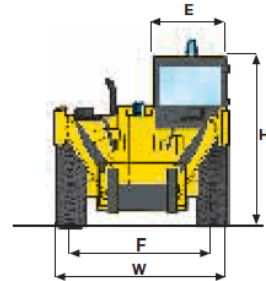
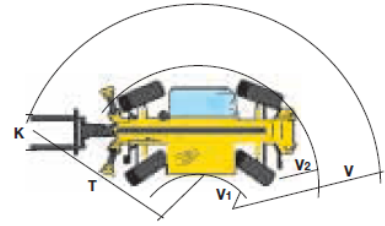
PERFORMANCE		LM1745 with stab. up	LM1745 with stab. down
Maximum lift capacity (at 500 mm from fork heel)	kg	4000	4500
Maximum lift height	m	16.24	16.60
Lift capacity at maximum reach	kg	-	450
Lift capacity at maximum lift height	kg	700	3000
Reach fully raised	m	2.00	1.00
Maximum forward reach	m	12.54	12.54
Height with max load (4000 kg)	m	7.40	7.95
Break out force	daN	7750	7750
Operating weight	kg	12300	12300

ENGINE	
Make and model	CNH 4TAA 3.9
Type	Diesel turbo aftercooler
Total displacement	litr 3.9
Net flywheel power (ISO 14396)	kW/hp 88/120
Max torque	Nm 435@1400 rpm

TRANSMISSION	
Type	Powershift
Forward/Reverse speeds	4/3
Max speed on road	Km/h 35

HYDRAULIC SYSTEM	
Type	load sensing
Hydraulic controls	Servo
Simultaneous movement	yes
Hydraulic pump	gear
Hydraulic flow	l/min 115
Hydraulic pressure	bar 245

CAPACITIES	
Fuel tank	litr 135
Hydraulic tank	litr 180



TYRES	
13.00x24	GOOD-YEAR
15.5x25	MICHELIN
405/70x24	MITAS
400/80x24	DUNLOP

DIMENSIONS (with MITAS 405/70x24)	A	B	C	D	E	F	G	H	I	K	T	U	V	V ₁	V ₂	W
mm	1200	3120	1902	6135	1000	2050	402	2450	1100	1260	4598	2730	5445	980	3890	2445

